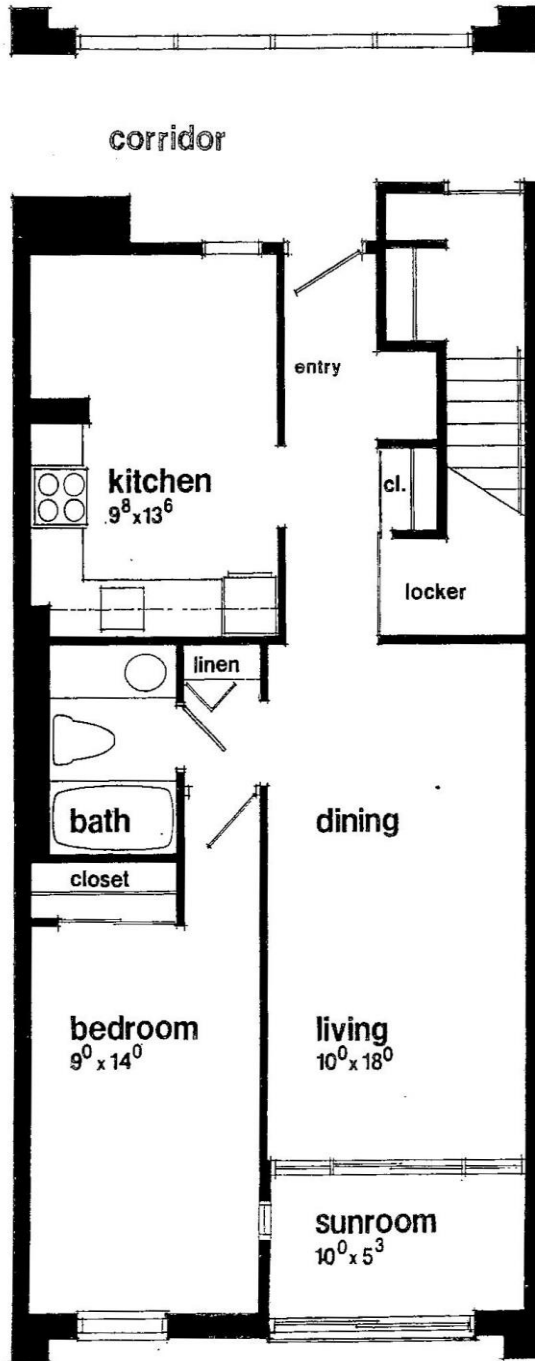


Floor Plans of Woodsworth Units

Unit Summary - Overview

Midrise Floor Plans 124 units	Size	Townhouse Floor Plans 70 units	Size
1A - Apt. w/ Sunroom (42)	1 bedroom	T1E - TH Stacked – 14	1 bedroom
1B - Apt. End Standard (14)	1 bedroom	T2D - TH Stacked – 14	2 bedroom
1C-Apt. Ground, No Terr (1)	1 bedroom	T3A - TH Stacked (14)	3 bedroom
1D-Apt. End, Top, Extra Rm (1)	1 bedroom	T3B - TH Stacked AF (25)	3 bedroom
2A - Apt. w/ Sunroom – 54	2 bedroom	T3C - TH Mews, No Rec Rm	3 bedroom
2B - Apt. Ground w/ patio (9)	2 bedroom	T4A - TH Standard (2)	4 bedroom
2C - Apt. Ground, Special (3)	2 bedroom		

Medium Rise Apartment – One Bedroom



1 Bedroom Apartment

in the

Woodsworth Apartment Building

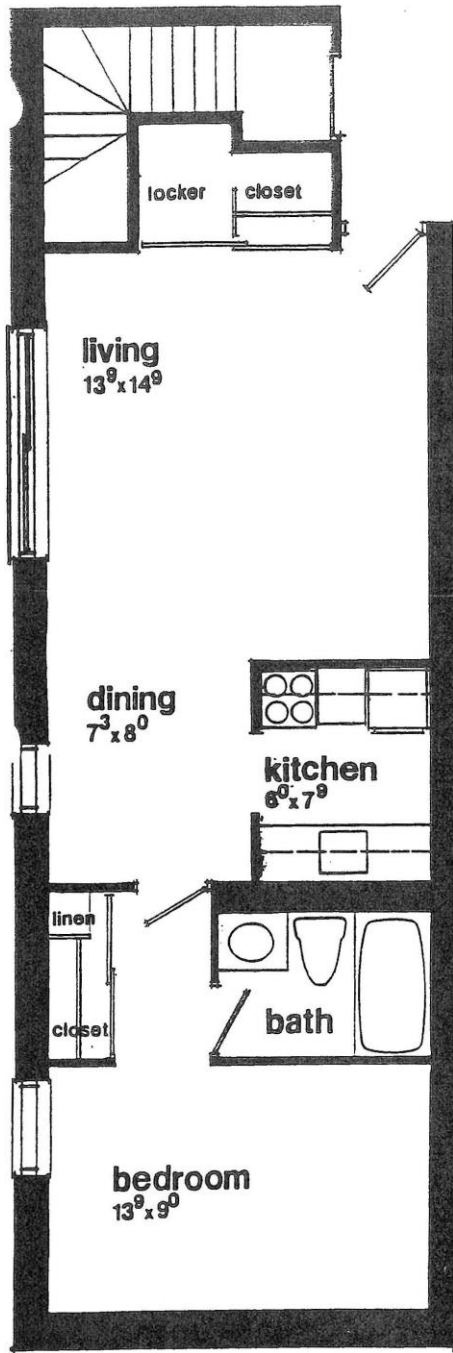
There are 39 apartments of this style located on the 3rd, 5th and 7th floors. Each of them is approached from the unique windowed corridors facing the park which are a distinctive feature of the Woodsworth Apartment Building. Three of these apartments are especially designed and equipped for the physically handicapped.

- entry hall with natural light, recessed storage space and coat closet
- large kitchen with breakfast nook overlooking the park
- living / dining room with sliding glass doors opening onto an enclosed sunroom
- the sunroom is heated for use year 'round and opens onto a French-style balcony for the summer
- in-suite storage locker
- linen closet
- window in the bedroom is designed to accommodate an air conditioning unit
- electric heat — individually metered and controlled

1B

Net living area: 653 sq.ft.

Medium Rise Apartment – End Units



1 Bedroom Apartment

in the

Woodsworth Apartment Building

East End units 301, 501, 701
West End units 332, 532, 732

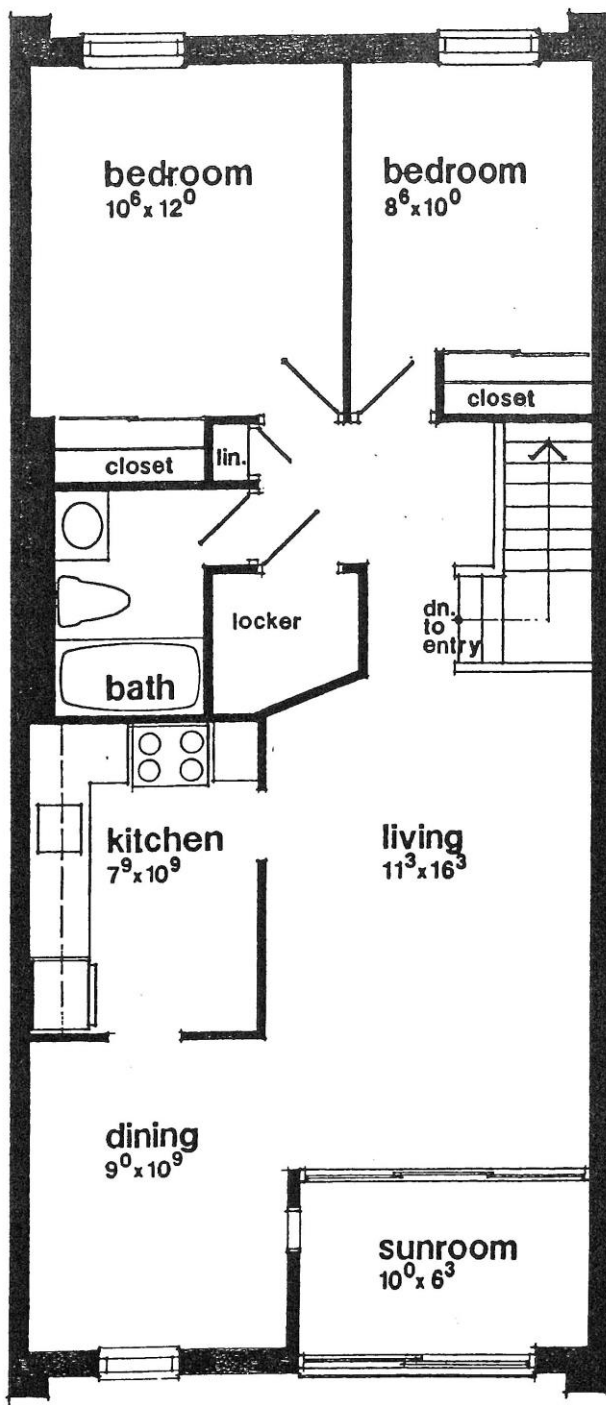
There are six apartments of this style located on the 3rd, and 7th floors at the east and west ends of the building.

- sliding glass doors in the living / dining room opening to a French-style balcony
- large bedroom with ample closet space
- window in the bedroom is designed to accommodate an conditioning unit
- in-suite storage locker
- electric heat — individually metered and controlled

18 =

701, 732

Medium Rise Apartment –Two Bedroom Units



2 Bedroom Apartment (42) Walk-up 3rd, 5th, 7th floors in the

Woodsworth Apartment Building

There are 54 apartments of this style located on the 2nd, 4th, 6th and 8th floors. Each of them features two separate views, facing the park to the north and overlooking the lake to the south which also allows for excellent cross ventilation.

The front entrance to these apartments is located on the floor below. This entry area has natural lighting, a recessed storage space and a coat closet. A flight of stairs leads up from the entry to the living area.

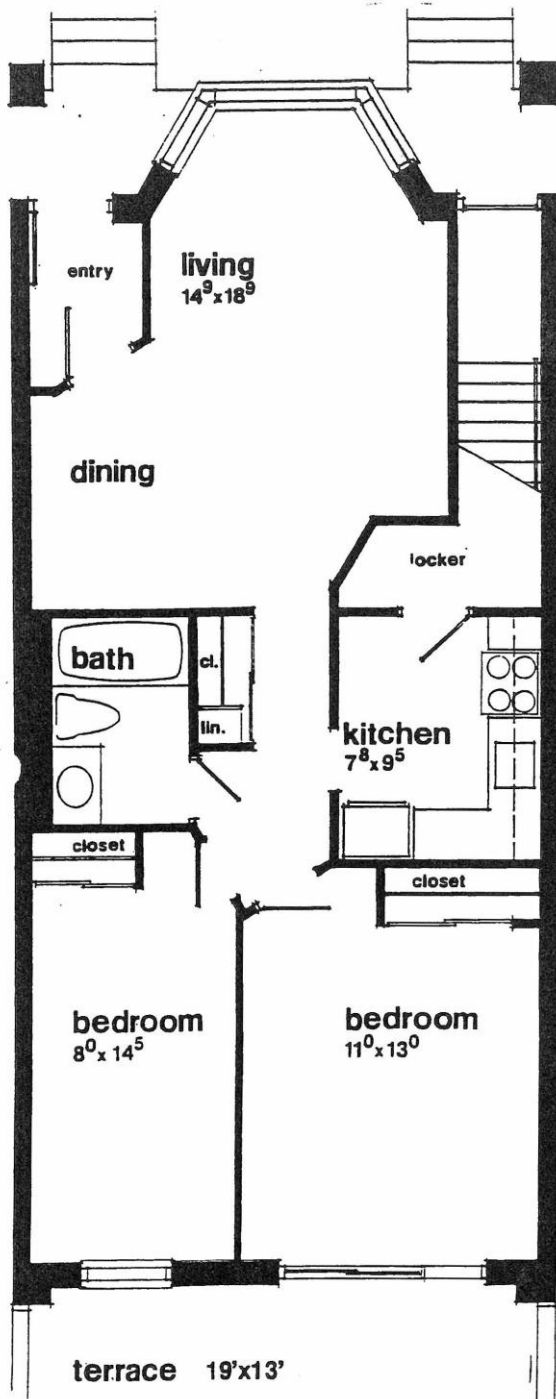
- living room with sliding glass doors opening onto an enclosed sunroom
- the sunroom is heated for use year 'round and opens onto a French-style balcony for the summer *
- separate dining room with windows facing both the sunroom and the outdoors
- eat-in kitchen
- in-suite storage locker
- linen closet
- one or more windows designed to accommodate an air conditioning unit

* the 2nd floor apartments have a spacious balcony in place of a sunroom

**Note: Wilton St Walk-up
decks, no linen closet, no
turn in stairs**

Wilton St units (9) are somewhat smaller
(no sunroom)

Medium Rise Two Bedrooms – Street Level, Wilton St.



2 Bedroom Apartment

STREET ENTRANCE
in the

Woodsworth Apartment Building

N/NE
There are ten two bedroom apartments on the ground level of the apartment building. Each apartment is a through unit with a street entrance on the north side and doors leading onto a private terrace on the south side of the building.

- vestibule
- living / dining room with bay window
- eat-in kitchen
- master bedroom with sliding glass doors opening onto a back terrace
- large terrace facing south with brick privacy walls, wood trellis and patio paving
- window in bedroom designed to accommodate air conditioning unit
- linen closet
- in-suite storage locker
- electric heat — individually metered and controlled

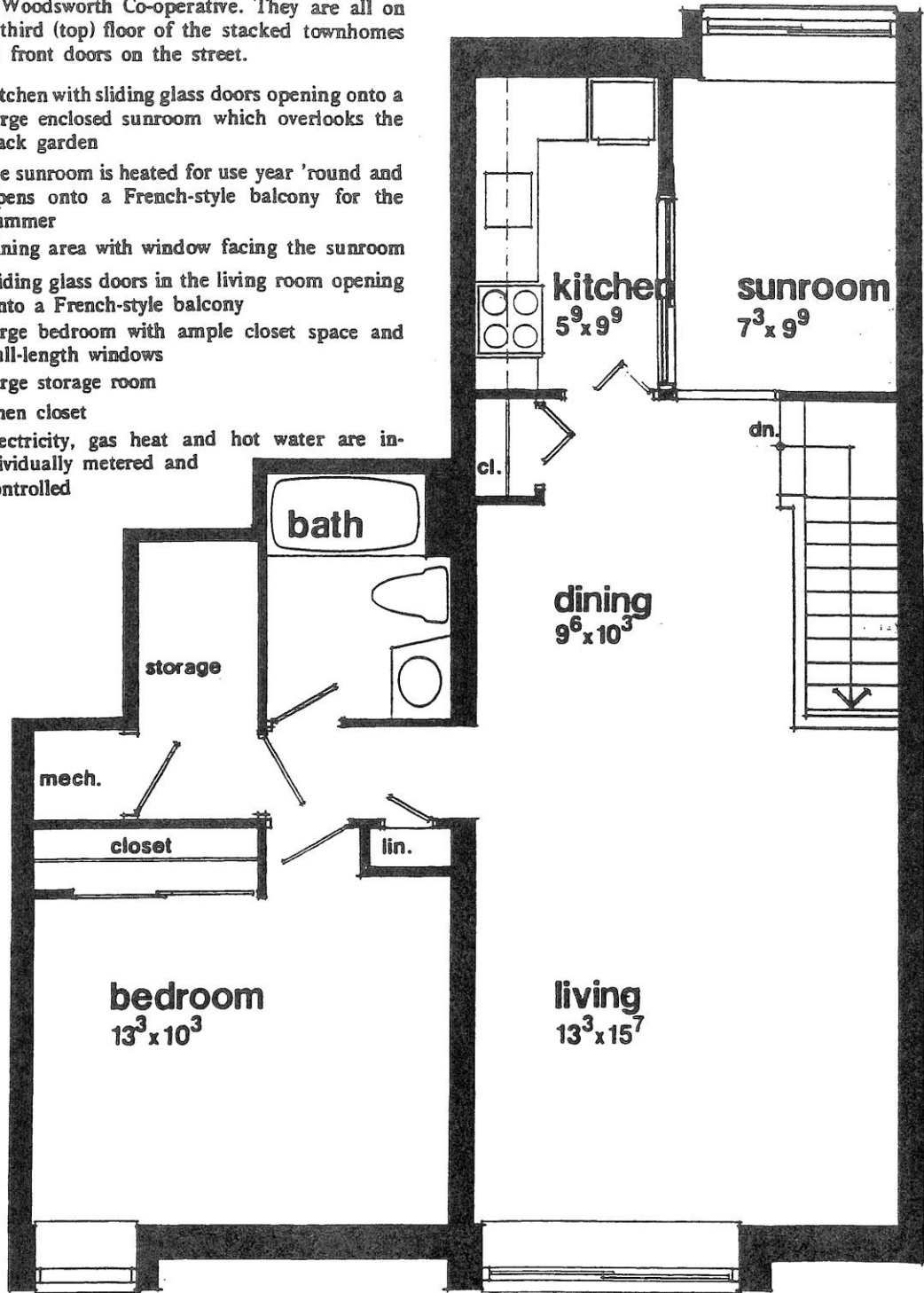
2B

One Bedroom Stacked Apartment – George and Frederick St.

1 Bedroom Stacked Townhome

There are 14 one bedroom stacked townhomes in the Woodsworth Co-operative. They are all on the third (top) floor of the stacked townhomes with front doors on the street.

- kitchen with sliding glass doors opening onto a large enclosed sunroom which overlooks the back garden
- the sunroom is heated for use year 'round and opens onto a French-style balcony for the summer
- dining area with window facing the sunroom
- sliding glass doors in the living room opening onto a French-style balcony
- large bedroom with ample closet space and full-length windows
- large storage room
- linen closet
- electricity, gas heat and hot water are individually metered and controlled



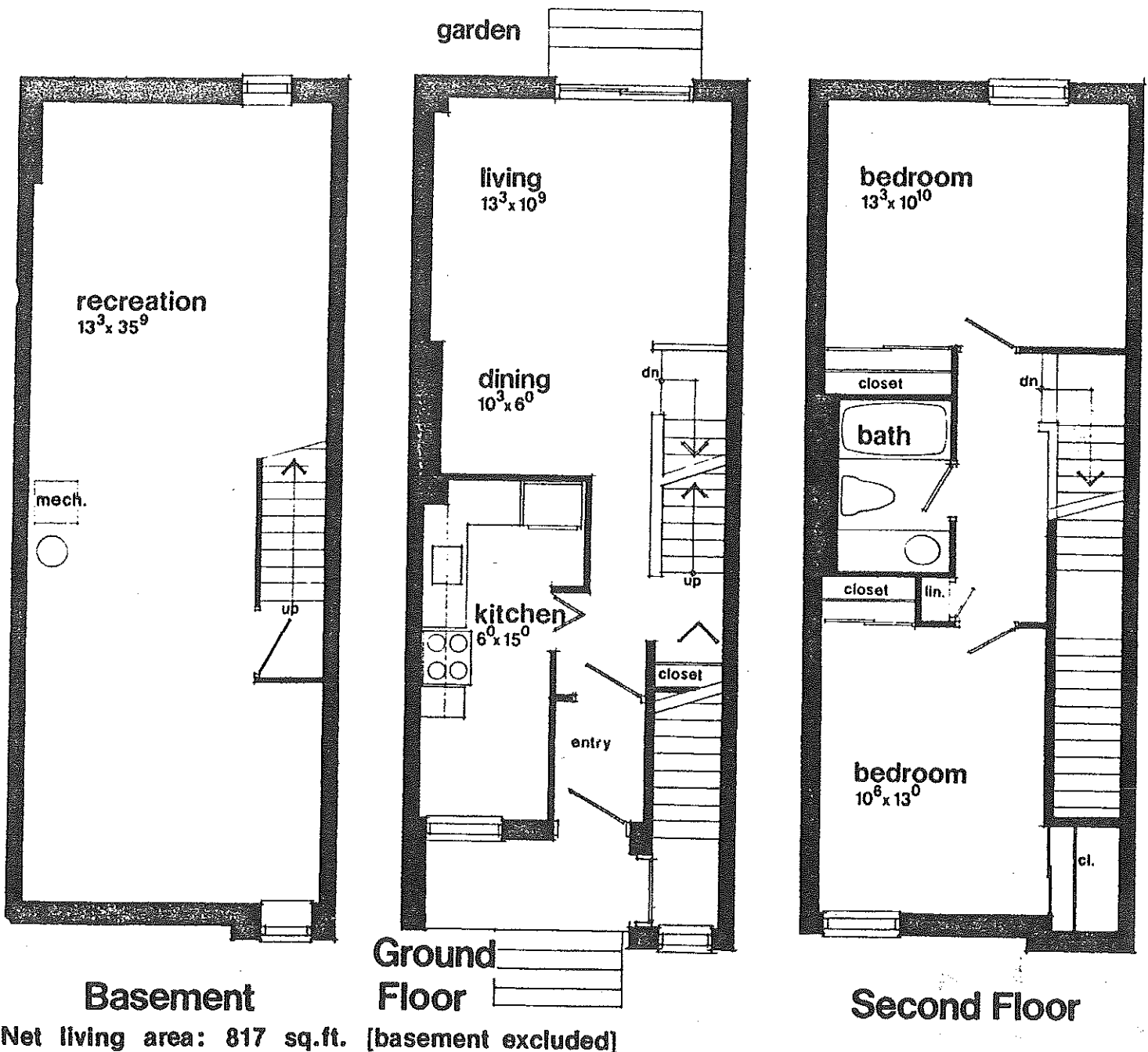
Net living area: 724 sq ft

TIE (14)

2 Bedroom Stacked Townhome

There are 14 two bedroom stacked townhomes in the Woodsworth Co-operative. They are two-storey homes plus full basement with front porches.

- unfinished basement recreation room with 2 windows
- entrance vestibule
- kitchen with breakfast nook facing the street
- living / dining room with sliding glass doors opening onto a backyard
- backyard, 21'x14' with privacy screens and patio paving
- two large bedrooms on the second floor with full-length windows
- the master bedroom has 2 large closets
- linen closet
- electricity, gas heat and hot water are individually metered and controlled
- roughed-in plumbing for laundry machines in the recreation room — common laundry facilities are also available in the townhouse complex.

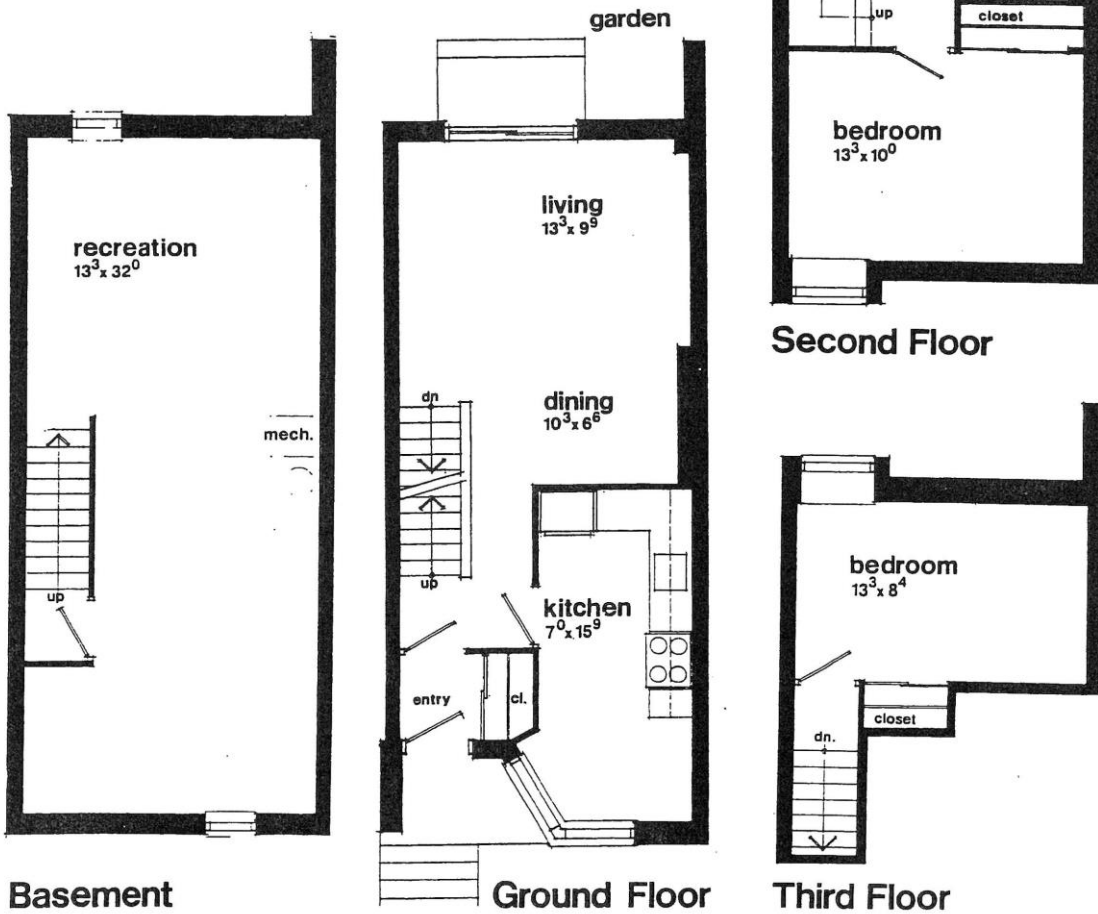


Three Bedroom Townhouse

George St and Frederick St 3 Bedroom Stacked Townhome

There are 14 three bedroom stacked townhomes in the Woodsworth Co-operative. They are three-storey homes plus full basement with front porches.

- unfinished basement recreation room with 2 windows
- entrance vestibule with coat closet
- large, windowed kitchen with eating area
- living / dining room with sliding glass doors opening onto a backyard
- backyard 25'x14' with privacy screens and patio paving
- two large bedrooms on the second floor with full length windows
- separate third floor bedroom with full length window
- linen closet
- electricity, gas heat and hot water are individually metered and controlled
- roughed-in plumbing for laundry machines in the recreation room — common laundry facilities are also available in the townhouse complex



Three Bedroom Townhouse

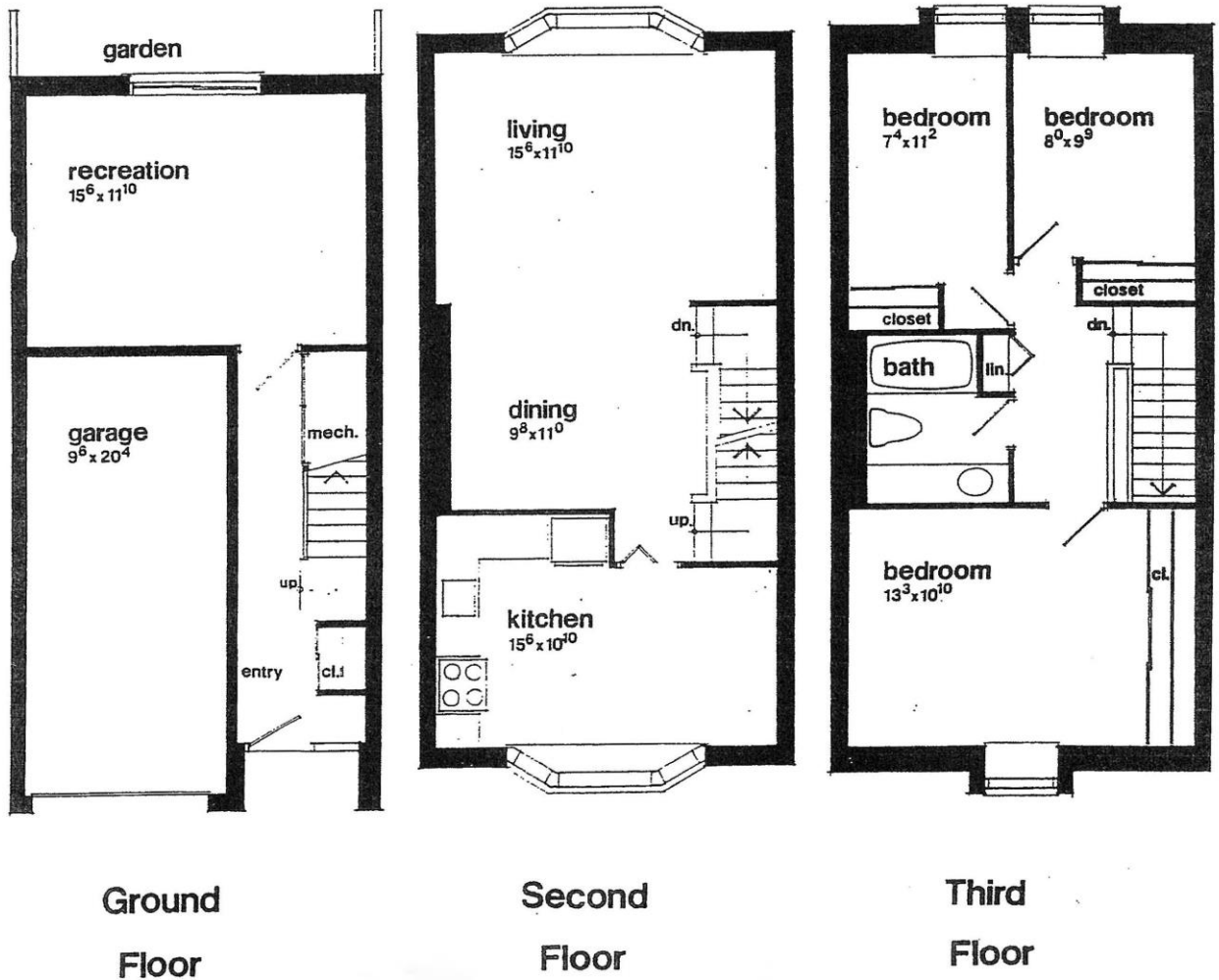
Albert Franck Place

3 Bedroom Mews Townhouse

There are **X** townhouses of this style all located on the mews. Each has a private entrance, garage and a recreation room on the ground floor.

25 townhouses + 1 with no rec room

- entrance hall with coat closet
- one car garage
- unfinished recreation room with sliding glass doors opening onto a back garden
- laundry hook-ups in the recreation room — common laundry facilities are also available in the mews
- back garden with cedar privacy screens and patio paving
- spacious living / dining room with bay window
- very large, country-style kitchen with bay window in the dining area
- large master bedroom with full width closets
- linen closet



4 Bedroom Stacked Townhouses

George and Frederick Street

There are only two units of this type.

Unfortunately we do not have a plan. However the basement and first two floors are identical to the three bedroom stacked units. The third floor has two bedrooms, one a larger master bedroom with a walk-in closet. There is also a powder room on this level.